



Coastal Management Program for the Shoalhaven Open Coastline and Jervis Bay

Progress Update

4 May 2022

Today....

- Overview of the project
- Progress update
- The next steps....

CMP will cover:

- ***Council managed coastline***
- ***40 Beaches + adjoining headlands***

CMP will address:

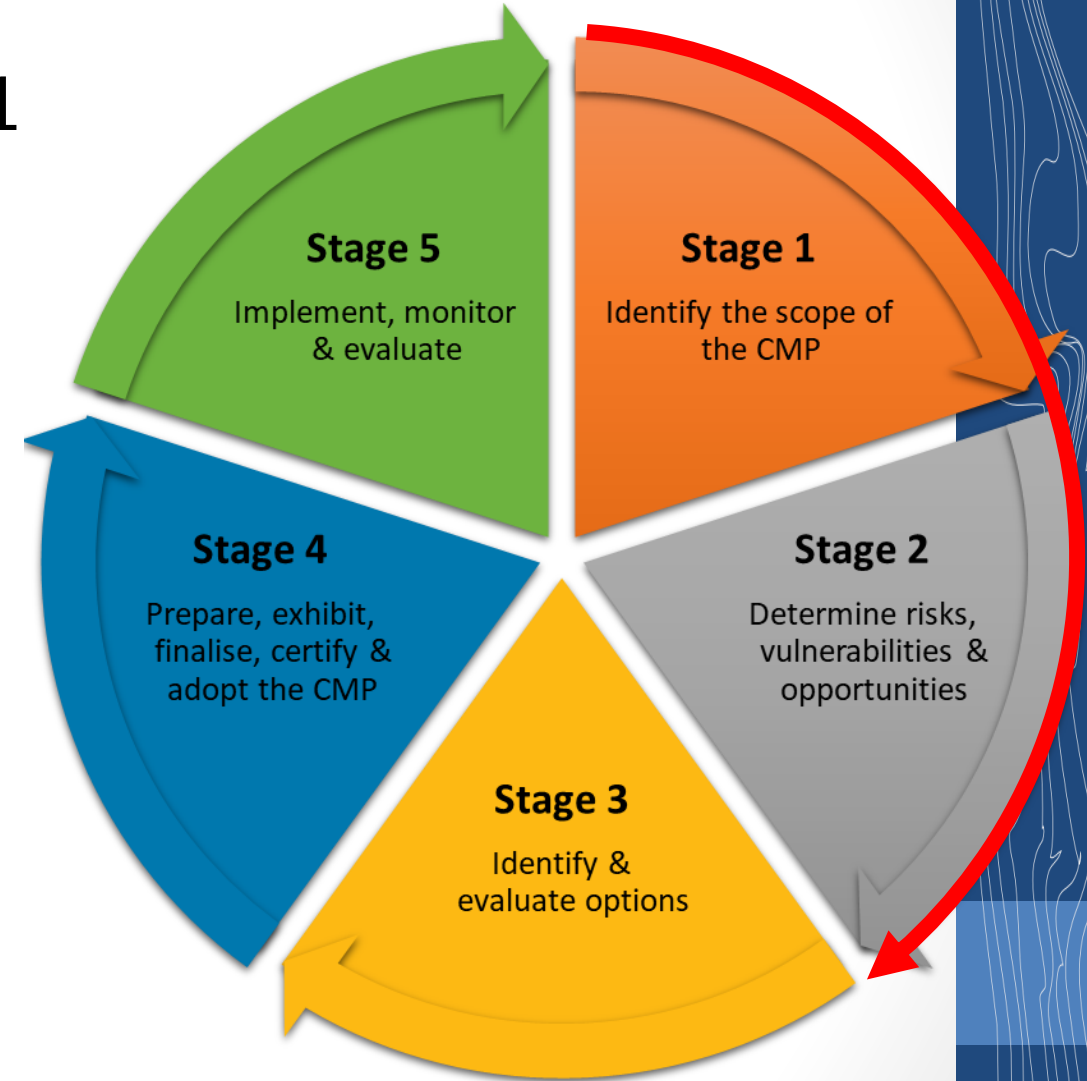
- ***Coastal hazard risks to assets & infrastructure***
- ***Environmental, social, and cultural heritage risks***

Google Earth

Maxar Technologies, CNES / Airbus, Data SIO

Progress snapshot

- Stage 2 Commenced in September 2021
 - Site inspections, and stakeholder engagement ✓
 - Coastal hazard mapping & risk assessment ✓
 - Geotechnical hazard mapping
 - Draft Stage 2 Summary Report ✓
- Stage 3 commenced in March 2022



Stage 2 Field Work & Engagement

- Undertaken in September 2021 and March 2022
- Inspections of at erosion affected beaches + at-risk infrastructure
- Engagement with Traditional Owners groups
- Continued engagement with Council & DPE staff about recent erosion



Stage 2 Analyses

- Two Parts:
 - Coastal Hazard risks to assets and infrastructure
 - Risk to social, cultural, and environmental values



Coastal Hazard Risks to Infrastructure

- Supplement the existing hazard mapping with additional future Sea Level Rise scenarios

- Existing Mapping:

- 2016
- +0.10 m for 2030
- +0.23 m for 2050
- +0.35 m for 2100

- New Supplementary Mapping:

- +0.60 m
- +0.90 m
- +1.20 m

Coastal Hazard Risks to Infrastructure

- Risk assessment of public assets,
Roads



Buildings & Infrastructure

Accessways

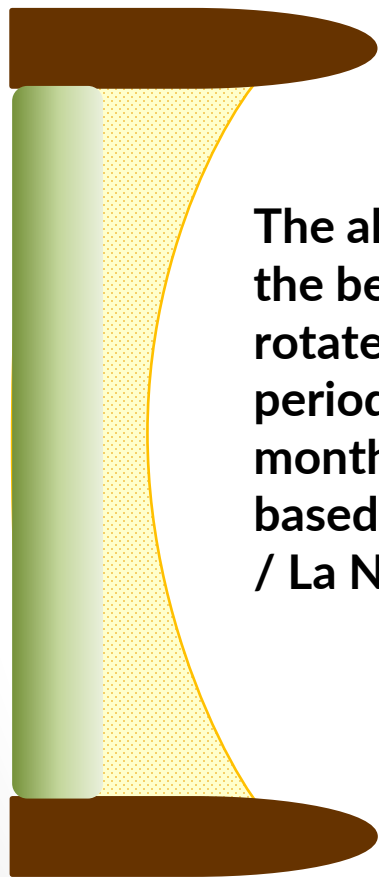


Water and wastewater



Some new insights.....

Impact of *beach rotation* on pocket and embayed beaches



The alignment of the beach can rotate over periods of months to years based on El Niño / La Niña cycles



Neutral / Typical

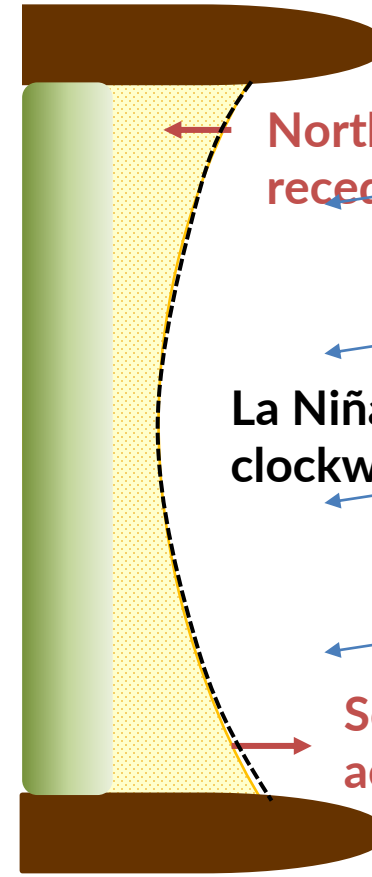


Northern end accretes

El Niño = clockwise rotation

Southern end recedes

El Niño



Northern end recedes

La Niña = anti-clockwise rotation

Southern end accretes

La Niña

Some new insights.....

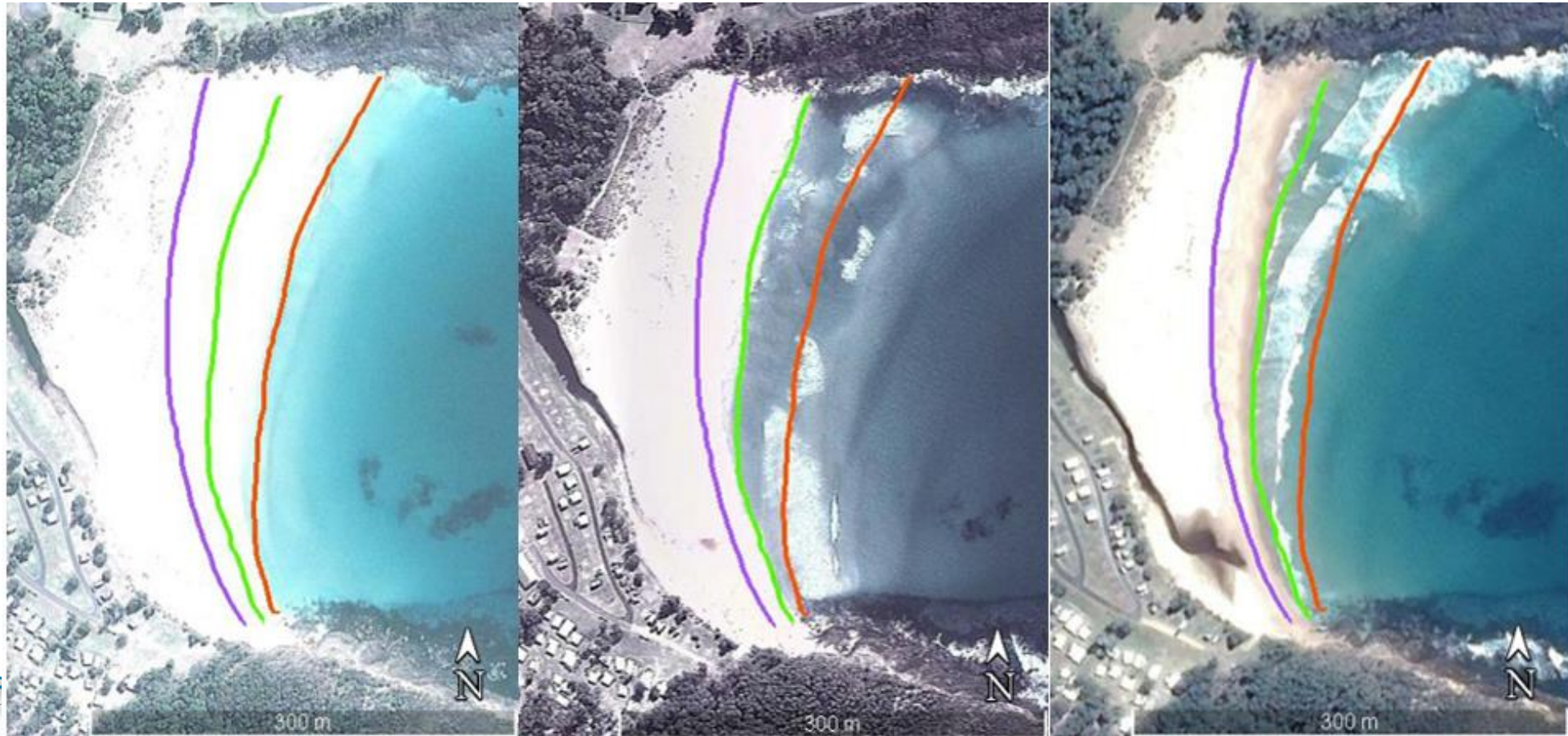
Example at Merry Beach....

2009

2011

2013

— 2009
— 2011
— 2013



Other Risks

Public Safety and Amenity



Loss of safe
beach/foreshore access



Boating access and safety



Ensuring recreational
amenity



Other Risks



Environmental



Weeds and invasive species



Vegetation vandalism



Habitat protection



Recreational use impacts on dunes



Other Risks



Cultural Heritage



Tangible and
intangible heritage
protection



Education and
awareness

The Stage 2 Summary Report

- Lots of ground to cover!
- Part I: Background & Methodology
- Part II: Beach by Beach Risk Assessments
 - Broken into 18 beach precincts
 - Site Description
 - Hazard Risk: Storm history and infrastructure risk assessment
 - Social, Environmental Risks



CONTENTS	
PART I – BACKGROUND AND METHODOLOGY	
1	INTRODUCTION
1.1	Background
1.2	Objectives this Report
1.3	The Study Area and Corresponding Related Assessments: Geotechnical
1.4	
2	HISTORICAL COASTAL HAZARD
2.1	Overview of Historical Studies and
2.2	Shoalhaven Coastal Hazard Mapping
2.3	Shoalhaven Coastal Zone Management
2.4	Shoalhaven CMP Scoping Study Findings
2.5	NSW State-wide Coastal Erosion and
2.6	Hazard Mapping Summary
3	THE APPROACH TO STAGE 2
3.1	Overview
3.2	Application of a Risk Based Framework
3.3	Framework Parameters
3.3.1	Likelihood Scale
3.3.2	Consequence Scale
3.3.3	Risk Matrix
4	OVERVIEW OF PROCESSES AND
4.1	Overview
4.2	Sediment Compartments
4.3	Coastal Hazards
4.3.1	Storm Erosion
4.3.2	Long Term Shoreline Recession
4.3.3	Coastal Cliff and Slope Instability
4.3.4	Coastal Inundation
4.3.5	Summary of Local Coastal Hazard
4.4	Medium Term Coastal Processes
4.5	Climate Change Impacts
4.6	Social and Environmental Risks
4.6.1	Environmental Values and Risks
4.6.2	Social Values and Risks
4.6.3	Cultural Heritage
PART II – RISK ASSESSMENT BY BEACH	
5	SHOALHAVEN HEADS
5.1	Site Description and Coastal Processes
5.2	Coastal Hazard Risk
5.3	Social and Environmental Risks
6	CULBURRA BEACH
6.1	Site Description and Coastal Processes
6.2	Coastal Hazard Risk
6.3	Social and Environmental Risks
7	WARRAIN BEACH
7.1	Site Description and Coastal Processes
7.2	Coastal Hazard Risk
7.3	Social and Environmental Risks
8	CURRARONG BEACH
8.1	Site Description and Coastal Processes
8.2	Coastal Hazard Risk
8.3	Social and Environmental Risks
9	CALLALA BAY
9.1	Site Description and Coastal Processes
9.2	Coastal Hazard Risk
9.3	Social and Environmental Risks
10	CALLALA BEACH
10.1	Site Description and Coastal Processes
10.2	Coastal Hazard Risk
10.3	Social and Environmental Risks
11	HUSKISSON AREA AND COLLINGWOOD BEACH
11.1	Site Description and Coastal Processes
11.2	Coastal Hazard Risk
11.3	Social and Environmental Risks
12	PLANTATION POINT TO HYAMS BEACH
12.1	Site Description and Coastal Processes
12.2	Coastal Hazard Risk
12.3	Social and Environmental Risks
13	CUDMIRRAH BEACH TO BENDALONG BOAT HARBOUR
13.1	Site Description and Coastal Processes
13.2	Coastal Hazard Risk
13.3	Social and Environmental Risks

Shoalhaven City Council | 08 April 2022
Shoalhaven Open Coast and Jervis Bay CMP Stage 2 Summary Report

Page ii

The Next Steps....

- Stage 3: Identify & Evaluate Options to address risks

Already started!



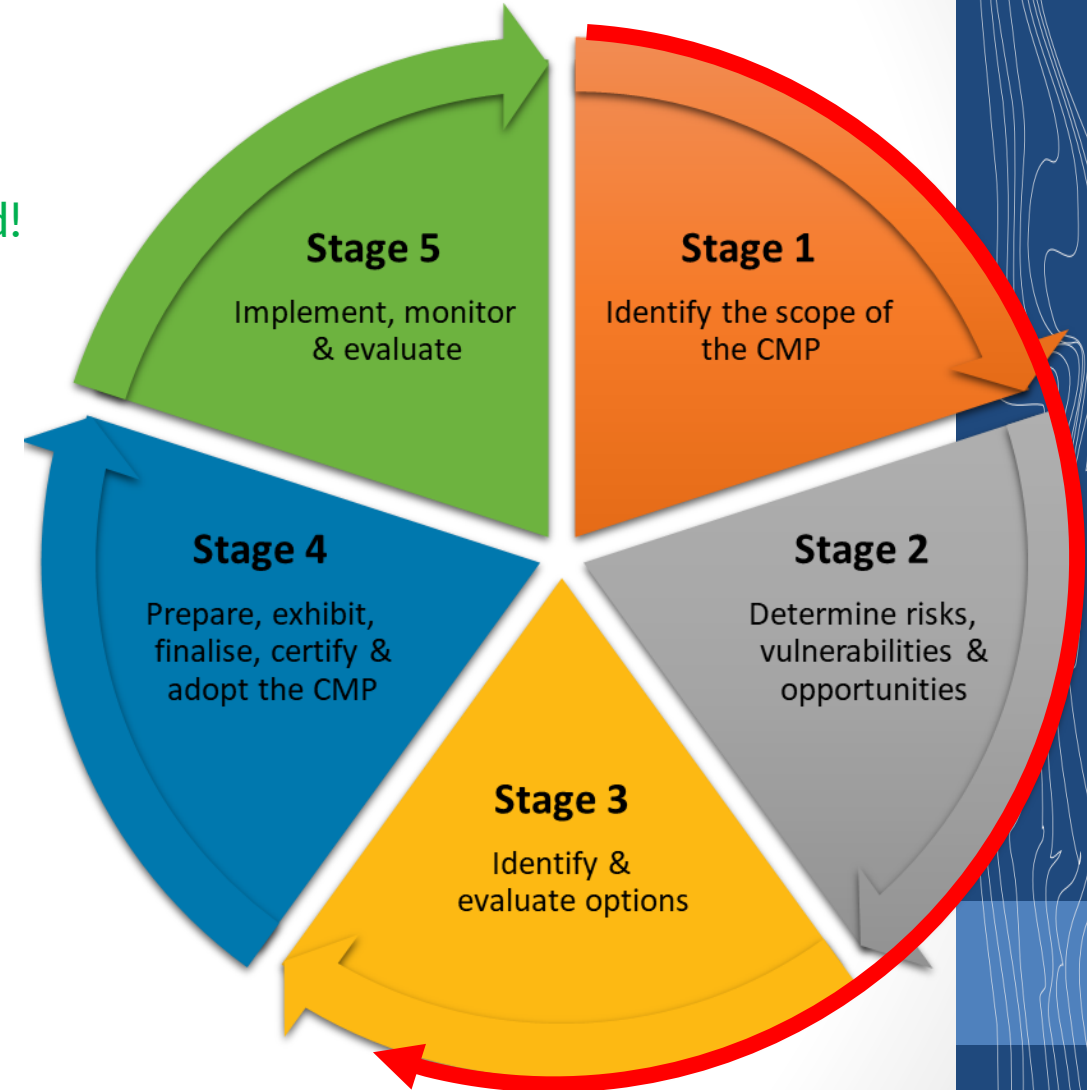
- Identify a long list of potential options



- Rank & prioritise



- Engagement with public authorities
- Engagement with community & other stakeholders



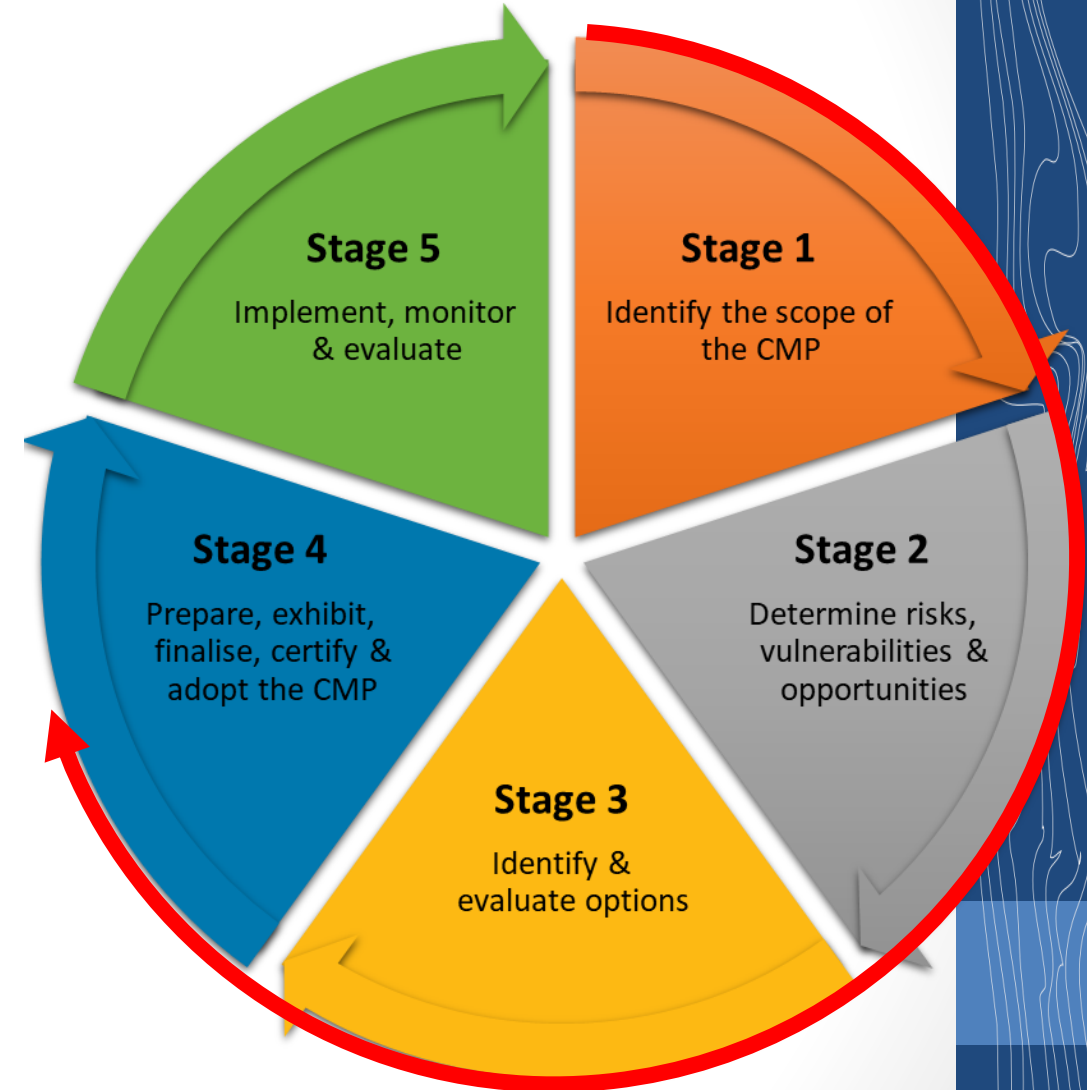
The Next Steps....

- Stage 4: Development of the CMPs:

Jervis Bay CMP



Open Coast CMP



Questions

