

## Central Coastal Management Program Advisory Committee

**Meeting Date:** Tuesday, 19 October, 2021

**Location:** Council Chambers, City Administrative Centre, Bridge Road, Nowra

## Minutes Attachments

### Index

CC21.3	Shoalhaven Beaches Asset Management Strategy Progress Report - Central	
Attachment 1	Central Committee - Advisian Presentation - Beach Accessways Management Strategy.....	3





# Shoalhaven Beaches Asset Management Strategy

Chris Adamantidis

October 2021



Planning,  
Industry &  
Environment



[advisian.com](http://advisian.com)

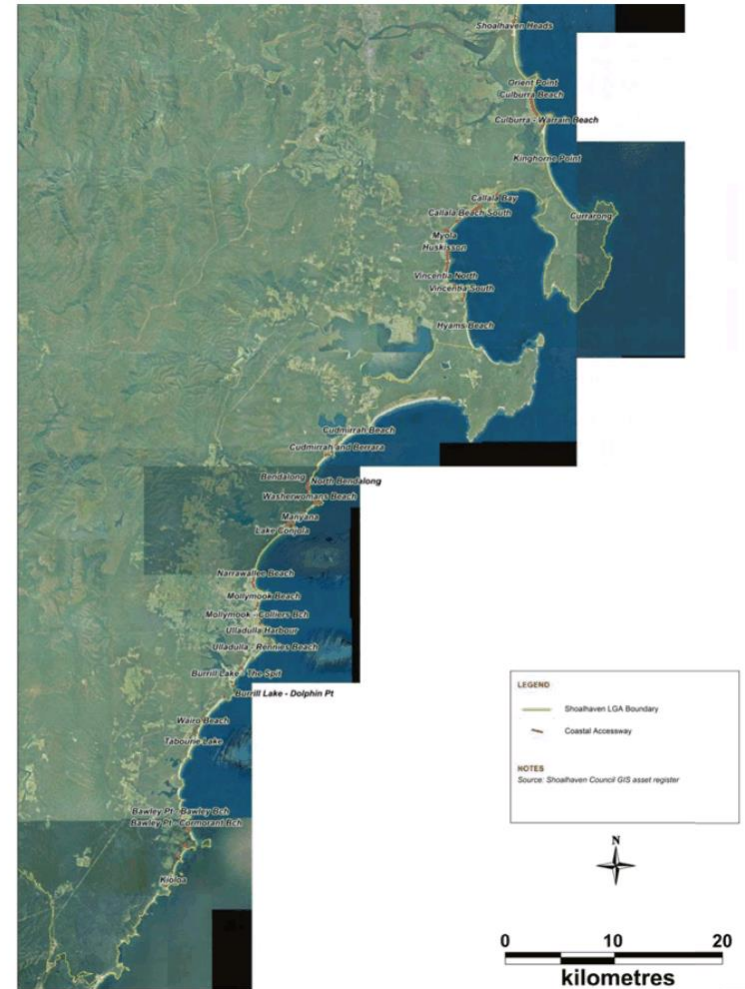


## Why does Council need a Beach Access Management Strategy?

- Council manages over 220 beach access points at 40 beaches throughout the LGA
- Assets include gates, fences, paths, stairs, signage and viewing areas
- Subject to harsh conditions, many are reaching the end of their design life
- Council needs to manage the accessways based on safety, community need, environmental impact.

## How was the Management Plan developed?

- Visual inspection and assessment of each accessway
- Provide a condition rating for each asset
- Identify infrastructure requiring repair/replacement
- Beach-by-beach assessment of beach access in each locality
- Develop basis for rationalising accessways
- Recommendations for each specific area – methods for repair, are accessways appropriately located?



# Field Inspections

**Asset Condition** – A condition rating from 1 to 5 is applied in the field to each asset

**5 - Excellent, as new.**



**Collingwood Beach.**

**4 - Good.**



**Berrara Creek**

**3 - Fair.**



**Mollymook**

**2 - Poor.**



**Gannet Beach**

**1 - Failed/Very Poor.**



**Burrill Beach, The Spit**

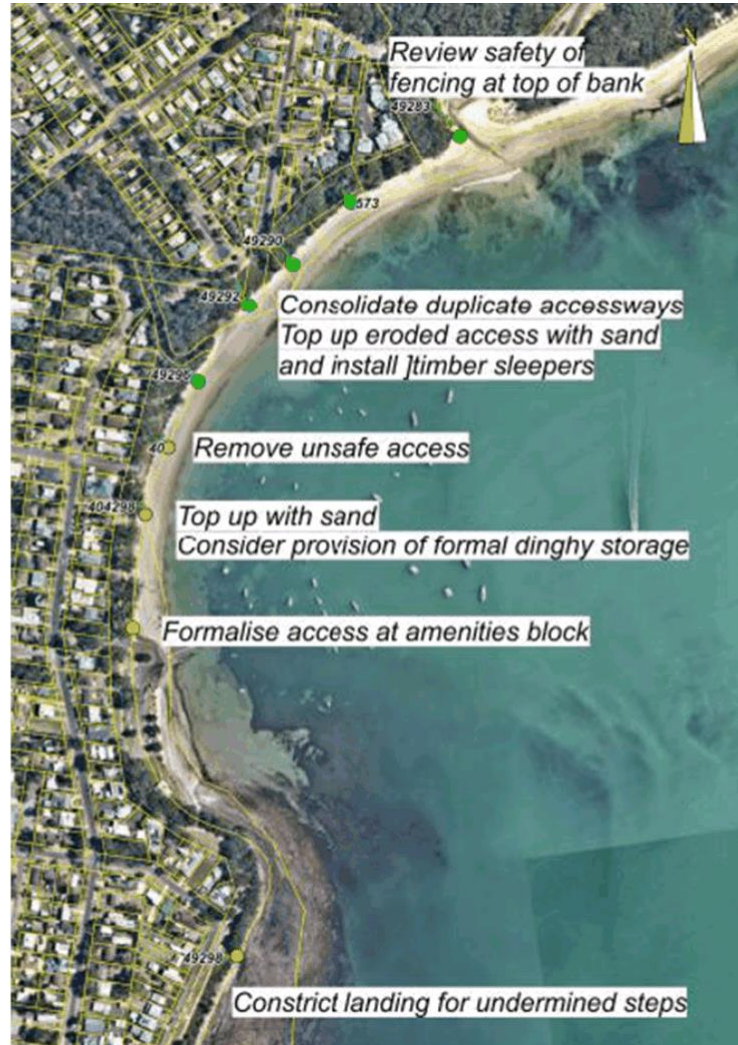
## Field Inspections

- **Notes on Asset Utility** – conveniently located, appears to be well used, alternative accessways nearby, what ancillary facilities are associated with each accessway.
- **Notes on coastal processes affecting asset** – The coastal processes include erosion, sand drift, stormwater, wind, wave action, etc.
- **Notes on impact of coastal asset on surrounding beach** – This field captures whether the accessway itself is having an adverse impact on the surrounding environment.
- **Notes on recommended actions to improve or rationalise asset** – based on the experience of the field officer and visual assessment.





# Callala Bay





# Huskisson



this is the footer



## Cudmirrah and Berrara

## Beach-by-beach Assessment

- Number of accessways available per linear distance in each particular locality
- Location of accessways in relation to key local amenities and accessibility
- Safety based on site assessments
- Environmental impacts of each accessway



## Beach by Beach Assessment – Criteria for assessment

- condition rating from the field inspection
- distance along the beach to the nearest accessway
- walking distance on the landward side between accessways
- duplicate access servicing the same area
- accessway services Surf Life Saving Club (SLSC)
- accessway used for or suitable for emergency access (e.g. flood control)
- Estimated ongoing maintenance required
- Impact on environment and heritage
- Services major development or facility
- Estimated number of lots serviced by accessway
- Number of accessways per kilometre length of beach



# Beach by Beach Assessment

## Criteria for Accessway Rationalisation

Shoalhaven Heads	Score 1-5		Score 1-5		Score 1-5		Score 1-5		Score 1-5		Score 1-5		Score 1-5			
Asset No.	141110	140118	140121	140127	140133	140136	664	140142/140139								
Condition rating from field assessment	4	4	1	1	2	2	3.5	3.5	3.5	3.5	3.5	3.5	3.5	3.5	3.5	
Distance along beach to nearest accessway (m)	318	3	35	0	35	0	190	2	190	2	82	1	82	1	89	1
Walking distance to nearest walkway at landward end (m)	752	4	37	0	37	0	290	3	290	3	11	0	11	0	90	1
Duplicate walkway servicing same area (Y/N)	N	5	Y	0	Y	0	N	5	N	5	N	5	N	5	N	5
Accessway services SLSC (Y/N)	Y	5	N	0	Y	5	N	0	N	0	N	0	N	0	N	0
Accessway used for or suitable for emergency access (e.g. flood control) (Y/N)	N	0	N	0	Y	5	N	0	N	0	N	0	Y	5	N	0
Estimated ongoing maintenance required (low, medium, high)	Low	5	Medium	3	High	0	Medium	3	Medium	3	Low	5	Low	5	Low	5
Impact of accessway on surrounding beach environment (low, medium, high)	High	0	Medium	3	Medium	3	Medium	3	Low	5	Low	5	Low	5	Low	5
Impact of accessway on surrounding heritage items (low, medium, high)	Low	5	Low	5	Low	5	Low	5	Low	5	Low	5	Low	5	Low	5
Services major development or facility (e.g caravan park) (Y/N)	Y	5	N	0	Y	5	Y	5	Y	5	N	0	N	0	N	0
Estimated no. lots serviced by accessway	756	5	0	0	453	5	1	1	1	1	312	5	1	1	1	1
Accessway used to access off-leash dog walking area (Y/N)	N	0	N	0	N	0	N	0	N	0	Y	5	N	0	N	0
<b>Accessway Score</b>	41	12	30	30.5	32.5	34.5	30.5	26.5								
<b>Accessway ranking</b>	1	8	6	4	3	2	4	7								
<b>Recommendation - Retain, remove or repair</b>	Retain	Remove	Repair	Retain	Retain	Retain	Retain	Retain								

3.1

### Comments

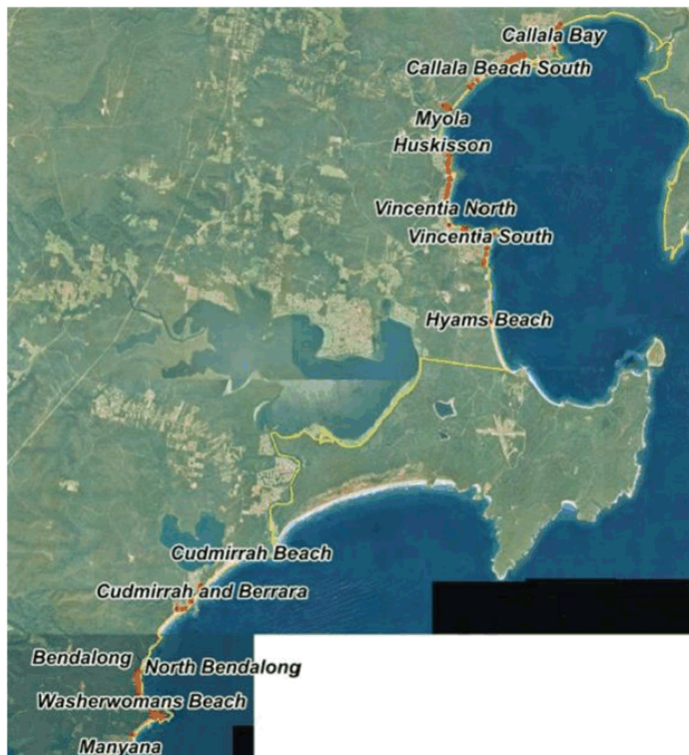
Access currently closed due to erosion, unsafe. Rehabilitation would damage the dune, other alternative access available nearby. Could be turned into a viewing platform set back from and day visitors

Retain as only access to river foreshore, currently used for birdwatching

### Overall Beach Assessment

Beach length serviced by accessways (km)	2.5
No. accessways (existing)	8
No. accessways per km length of beach (existing)	3.20
No. accessways recommended to be retained	7
No. accessways per km length of beach (proposed)	2.80

## Summary - Central



Area	Total accessways (existing)	Accessways recommended to be retained or upgraded	Key Issues
Shoalhaven Heads	8	7	Wind-blown dune stability Beach erosion
Culburra	23	19	Multiple accessways servicing same area No all-ability access to beach Erosion at base of access
Warrain	11	8	Informal access Erosion at base of access
Currarong	13	9	Multiple accessways servicing same area No all-ability access to beach Beach erosion
Callala Bay	9	6	Erosion at base Dinghy access and storage Lowering of accessways relative to dune
Callala Beach/Myola	18	16	Dune vegetation damage Multiple accessways servicing same area Lowering of accessways relative to dune Creek bank erosion (Myola)
Huskisson (Shark Net and Huskisson Beach)	16	13	Erosion at base Multiple accessways servicing same area Creek bank erosion (Moona Moona Creek)
Collingwood Beach	14	10	Dune vegetation damage Lowering of accessways relative to dune Stormwater erosion
Orion and Barfleur Beaches	7	6	Stormwater drainage Slope stability
Nelson and Blenheim Beaches	8	7	Slope stability Erosion at base Stormwater erosion
Hyams Beach	3	3	Erosion at base
Sussex Inlet	3	3	Wind-blown dune stability
Curmirrah and Berrara	8	7	Stormwater erosion Slope stability
Bendalong	12	10	Track safety due to lack of maintenance/bushfire impact Erosion at base Stormwater erosion
Manyana	5	4	Stormwater erosion
Cunjurong Point	5	3	Slope stability Stormwater erosion

## Key Issues - Central



Nelson Beach – slope stability, stormwater outflow



Berrara - Erosion due to runoff



Callala Bay – no formal dinghy storage



Cunjurong – erosion impacts due to presence of track

## Key Issues - Central



Myola – erosion of dune caused by track



Hyams Beach – erosion of base of walkway



Myola – erosion of creek bank impacting on access



Collingwood Beach – stormwater erosion



## Issues - Central



Path eroded by stormwater at Cunjurong Point



Undermined stairway affected by slope instability at Cunjurong Point



Damaged and overgrown stairway at Bendalong

## Specific management responses at each accessway

**List of accessways, recommendations and comments**

Action ID	Location	Site/asset ID	Recommendation	Asset Condition (1-5)	Priority	Comment
SN2	Shark Net Beach	140152	Maintain	4	Low	Undertake routine maintenance in accordance with Council's maintenance schedule
SN3	Shark Net Beach	140153	Minor maintenance	4.5	Low	Repair erosion at base of track, weeding. Beach scraping and dune revegetation at the base of tracks 140153 and 140155 where minor erosion is occurring.
SN4	Shark Net Beach	140155	Minor maintenance	3.5	Low	Repair erosion at base of track, weeding. Beach scraping and dune revegetation at the base of tracks 140153 and 140155 where minor erosion is occurring.
H1	Huskisson Beach	140161	Maintain	3	Low	Undertake routine maintenance in accordance with Council's maintenance schedule
H2	Huskisson Beach	140164	Close	3	Low	Duplicate accessway, overgrown, remove and rehabilitate
H3	Huskisson Beach	140167	Requires repair	3	Medium	Top up with sand, remove damaged board and chain, provide vertical timber "steps" to reduce erosion
H4	Huskisson Beach	404058	Minor maintenance	3	Medium	Main access to beach, repair erosion/top up with sand, weeding, repair damaged surface/refill stairs with sand/cement/gravel mix, revegetation to discourage informal access
H5	Huskisson Beach	140170	Maintain	4	Low	Undertake routine maintenance in accordance with Council's maintenance schedule
H6	Huskisson Beach	140173	Close	2	Medium	Duplicate accessway in poor condition, remove and rehabilitate
H7	Huskisson Beach	140176	Requires repair	3	High	Main access for caravan park. Remove or replace rubberised surface, very slippery, otherwise flatten grade to improve safety
H8	Huskisson Beach	155768	Maintain	3	Low	Main access to playground and second access to caravan park. Undertake routine maintenance in accordance with Council's maintenance schedule
H9	Huskisson Beach	155770	Maintain	5	Low	Undertake routine maintenance in accordance with Council's maintenance schedule
H10	Huskisson Beach	155773	Close	0	Low	Closed path, remove from asset register
H11	Huskisson Beach	155774	Maintain	4	Low	Undertake routine maintenance in accordance with Council's maintenance schedule
H12	Huskisson Beach	155775	Requires repair	4	Medium	Repair fencing, investigate stability of trees at base
H13	Huskisson Beach	Creek access	Close	4	High	Repair erosion at adjacent bank; consider removal of stairway as ample adjacent access available
COL1	Collingwood Beach	557	Close	0	Low	Closed path, remove from asset register
COL2	Collingwood Beach	140281	Maintain	4	Low	Undertake routine maintenance in accordance with Council's maintenance schedule
COL3	Collingwood Beach	140283	Minor maintenance	4	Low	Revegetate damaged dune
COL4	Collingwood Beach	140286	Close	4	Low	Duplicate track, remove and rehabilitate
COL5	Collingwood Beach	140289	Maintain	4	Low	Undertake routine maintenance in accordance with Council's maintenance schedule
COL6	Collingwood Beach	140292	Close	4	Low	Duplicate track, remove and rehabilitate

## Common Issues across Shoalhaven

- Erosion at the base of the accessways
- Stormwater erosion
- Slope instability
- General Maintenance/vegetation encroachment
- Damage to dune vegetation and spread of weeds
- Lowering of the base of the accessways relative to the surrounding dune
- Difficult/remote access
- Creek bank erosion



Figure 5-1 – Erosion at base of track (Hyams Beach). Consider reorienting track so it doesn't face south and is more perpendicular to the beach, and consider installation of timber sleepers at base to reduce the effects of this erosion.



## Proposed Solutions – reduce lowering of track relative to dune

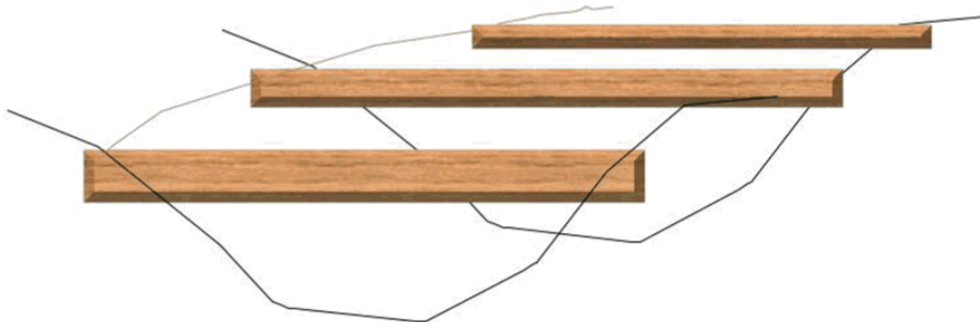


Figure 5-5 – Fill eroded area with sand and install timber sleepers to address lowering of accessway relative to dune

These can be treated by topping up with sand to restore the accessway elevation relative to the dune, and placement of timber sleepers to maintain the accessway level

Reduce erosion due to rainfall/runoff



Figure 3-10 – Example of drainage control "hump" in gravel path, Mollymook Beach, March 2021.

## Repair of eroded track bases



Figure 5-4 – Recommended treatment for erosion at base of access, where gradient is low - moderate (see examples above)

## Typical repair of undermined staircase

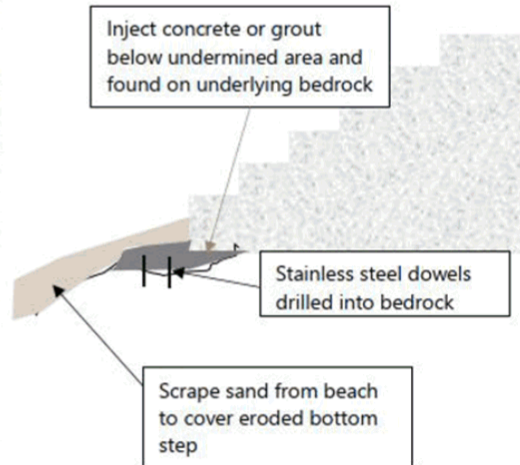
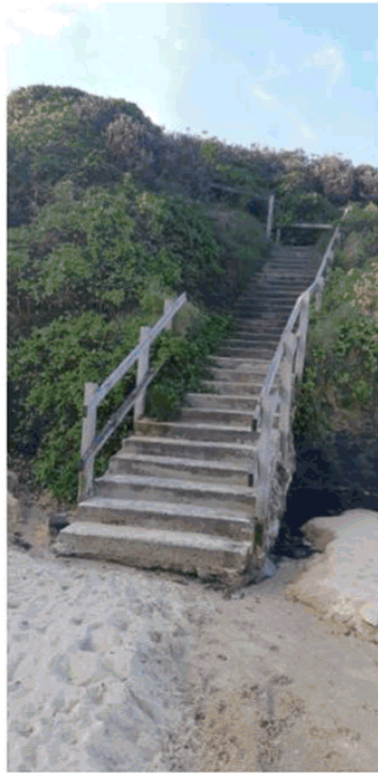


Figure 5-6 – Example undermined staircase and potential treatment

## Creek bank erosion



Figure 3-39 – Severe bank erosion at Moona Moona Creek adjacent to timber stairway (February 2021)



### Moona Moona Creek

- Investigate cause and repair bank erosion
- Consider repairing bank erosion with gravel and placed boulders.

### Currambene Creek, Myola

- Investigate the root cause of severe erosion at Currambene Creek and consider mitigation measures (e.g. bank protection, or modification/removal of the old training wall).
- Consider deeper foundations for the stairway at its current location, or moving the main foreshore access close to the root of the existing breakwater where bank erosion is less severe.



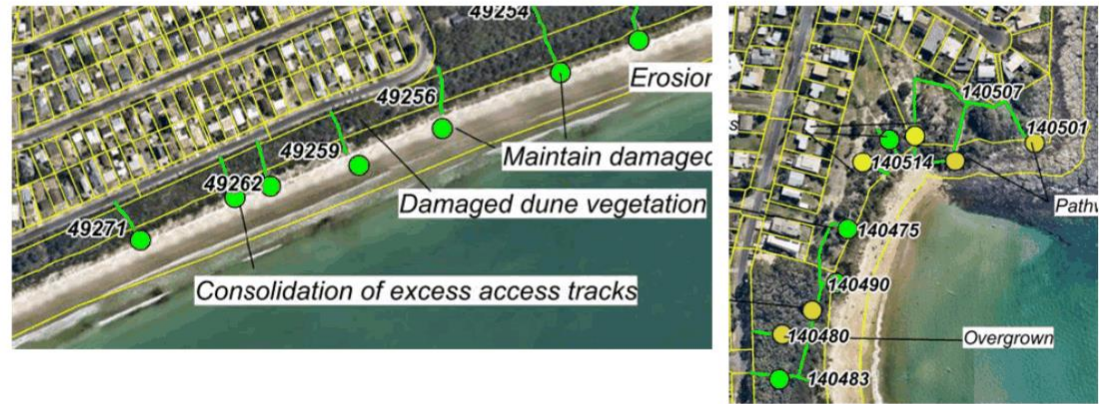
## Conclusions and Next steps

- Most accessways in the Shoalhaven are in serviceable condition, a small number require maintenance and are unsafe.
- Standard Council designs for the existing accessways are appropriate for the setting of the accessway and have considered local coastal processes.
- A methodology has been developed to rationalise beach access based on environmental, social and economic risks
- General and specific recommendations to assist Council to manage beach accessways into the future



## Closure of accessways – case study

- Why we have recommended some be closed?
- Reduce no. of accessways and focus resources
- Can polarise communities – e.g. backlash from proposed closing of excess accessways at northern end of Callala Beach – need to do best thing for broader community



Example – track at Currarong recommended for closure